

# KNOWLEDGE ORGANISER—Where does our water come from?

## Substantive knowledge:

Describe where our water comes from and how water is distributed from the Elan Valley.

Describe the water cycle, using appropriate vocabulary, and how water is stored.

Use fieldwork to observe and record the water cycle including physical features of mountains.



Where does the water in our tap come from? How do we get water into our homes?

Water gets to people's houses and into taps from local water sources such as reservoirs.

The water from the Elan Valley supplies water to Birmingham.

Can you follow the route water takes from the Elan Valley through to Birmingham?



## Key Vocabulary:

Weather, county, climate, map, symbol, key



The Aswan Dam—what were the arguments for and against the dam being built?

Why was the dam built in the first place?

Has it had a positive / negative impact on the surrounding areas?

What is a dam? Why do we build dams?

What is the water behind the dam?

What do dams do?

Reservoirs are large lakes which can be natural or man-made. They store the water to be transported into people's homes.

Why might a reservoir be useful to people who live in the nearby area?



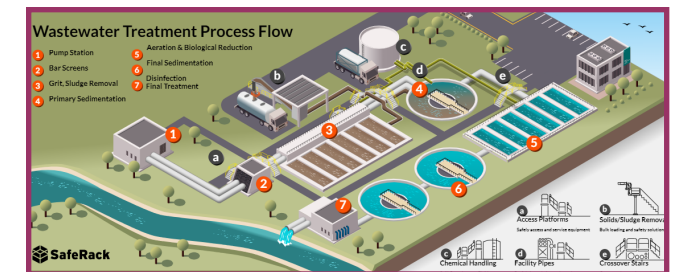
Flooding of the River Nile: Are there any benefits to rivers flooding? What might they be? What are the negatives of flooding? How does the floodwater affect the surrounding area?

How does a water treatment centre work?

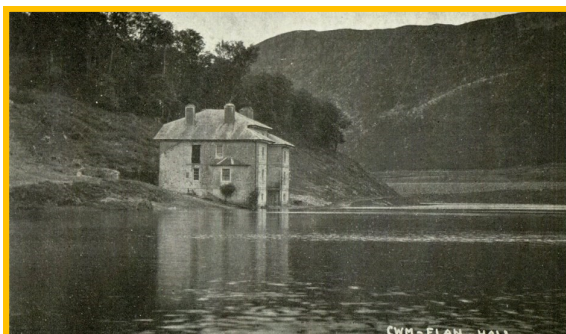
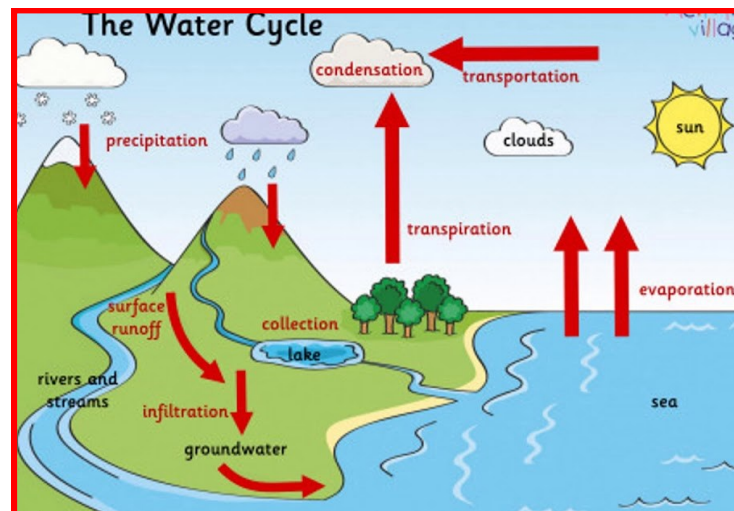
Water is passed through a tank of sand which traps the particles as the water goes through.

It is then slowly filtered through much finer sand.

This removes the smaller particles before the water can move on for final treatment.



The water cycle: Evaporation, Condensation, Precipitation, Run-off and Transpiration.



What is the impact of flooding on the local area?

What happens to the local villages, churches and farmland?

How do local people feel when they have experienced the floods?

How would you feel if you were local to the area?

Has anyone experienced any flooding in their own areas?

Elan Valley: Follow the water from source to the dam.

Visit to the Elan Valley centre: What is the historical evidence of the village under the reservoir?

